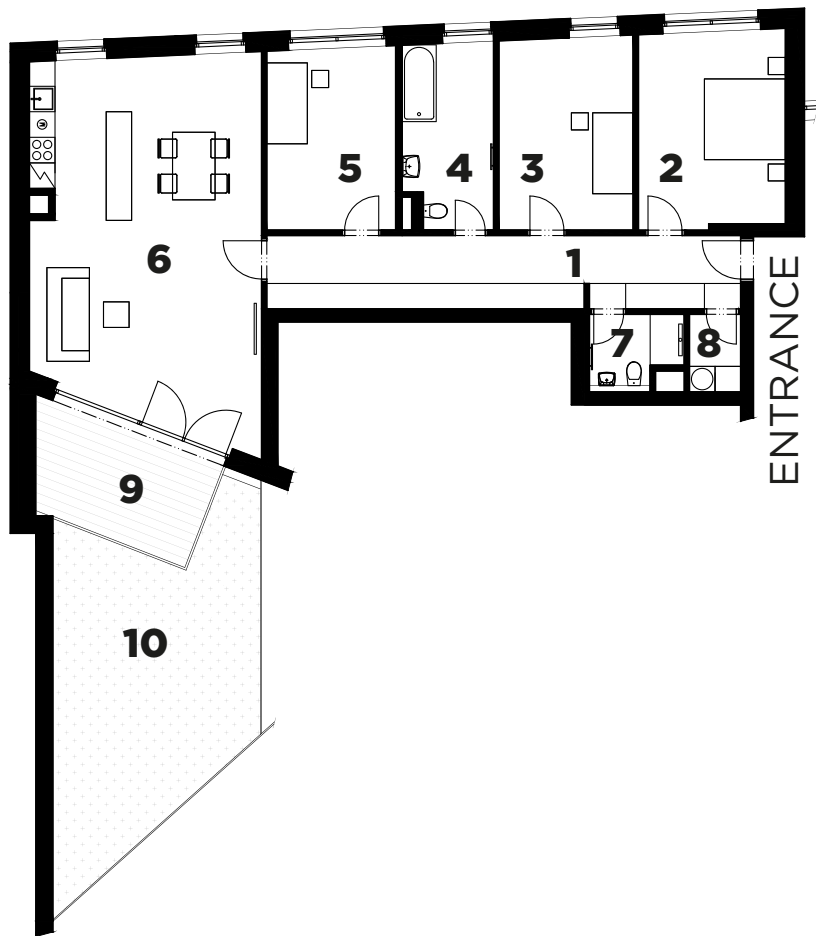
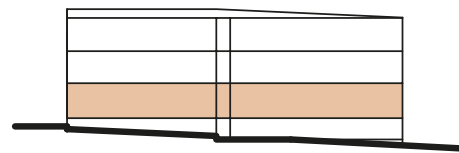
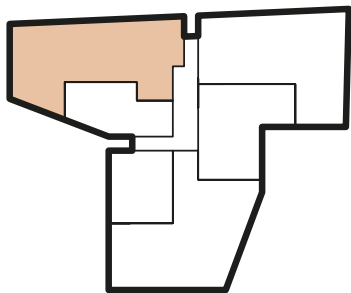


# Apartment 1.1 / 1. NP orientation: SN

## 3 bedrooms | 166,9 m<sup>2</sup>



street Libocká



street Libocká

1	Hall	20,4 m <sup>2</sup>
2	Room	18,1 m <sup>2</sup>
3	Room	15,6 m <sup>2</sup>
4	Bathroom	8,0 m <sup>2</sup>
5	Room	13,9 m <sup>2</sup>
6	Living room	48,8 m <sup>2</sup>
7	Toilet	3,3 m <sup>2</sup>
8	Utility room	2,3 m <sup>2</sup>
<b>Total floor area of the apartment*</b>		<b>130,4 m<sup>2</sup></b>
9	Terrace	12,8 m <sup>2</sup>
10	Garden	23,7 m <sup>2</sup>
<b>Total area</b>		<b>166,9 m<sup>2</sup></b>

\* "Floor area" means the interior ground plan area of all the rooms in the house, including the ground plan area of all vertical load-bearing and non-load-bearing structures inside the house which is determined in accordance with the definition set out in Section 3 of Government Regulation No. 366/2013 Coll. of September 30, 2013, on the regulation of certain matters related to property co-ownership.

\*\* The price of a garage parking space is CZK 570,000 incl. VAT. The price of the apartment includes the cellar and VAT.

