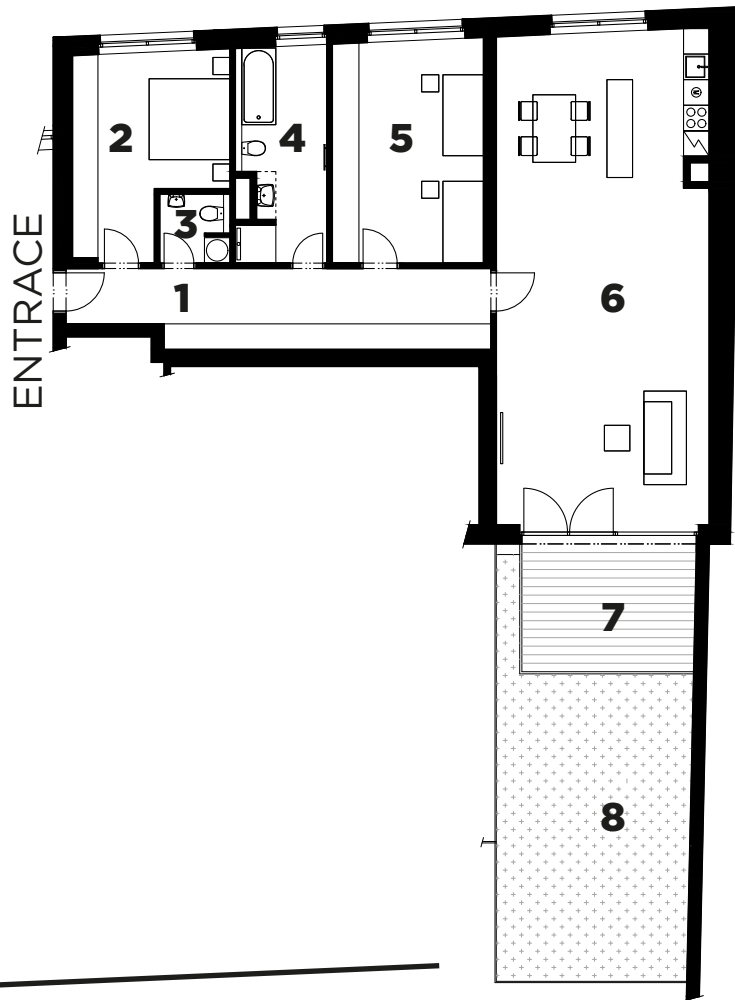


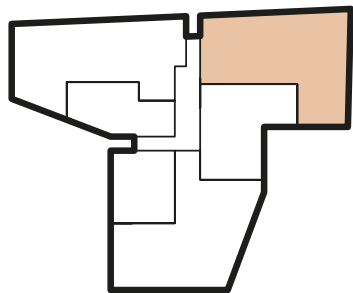
# Apartment 1.2 / 1. NP orientation: SN

## 2 bedrooms | 184,3 m<sup>2</sup>

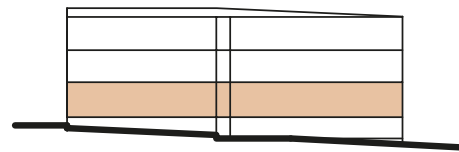


1	Hall	19,3 m <sup>2</sup>
2	Room	17,2 m <sup>2</sup>
3	Toilet	2,9 m <sup>2</sup>
4	Bathroom	9,2 m <sup>2</sup>
5	Room	20,7 m <sup>2</sup>
6	Living room	64,0 m <sup>2</sup>
<b>Total floor area of the apartment*</b>		<b>133,3 m<sup>2</sup></b>
7	Terrace	14,1 m <sup>2</sup>
8	Garden	36,9 m <sup>2</sup>
<b>Total area</b>		<b>184,3 m<sup>2</sup></b>

street Libocká



street Libocká



\* "Floor area" means the interior ground plan area of all the rooms in the house, including the ground plan area of all vertical load-bearing and non-load-bearing structures inside the house which is determined in accordance with the definition set out in Section 3 of Government Regulation No. 366/2013 Coll. of September 30, 2013, on the regulation of certain matters related to property co-ownership.

\*\* The price of a garage parking space is CZK 570,000 incl. VAT. The price of the apartment includes the cellar and VAT.

